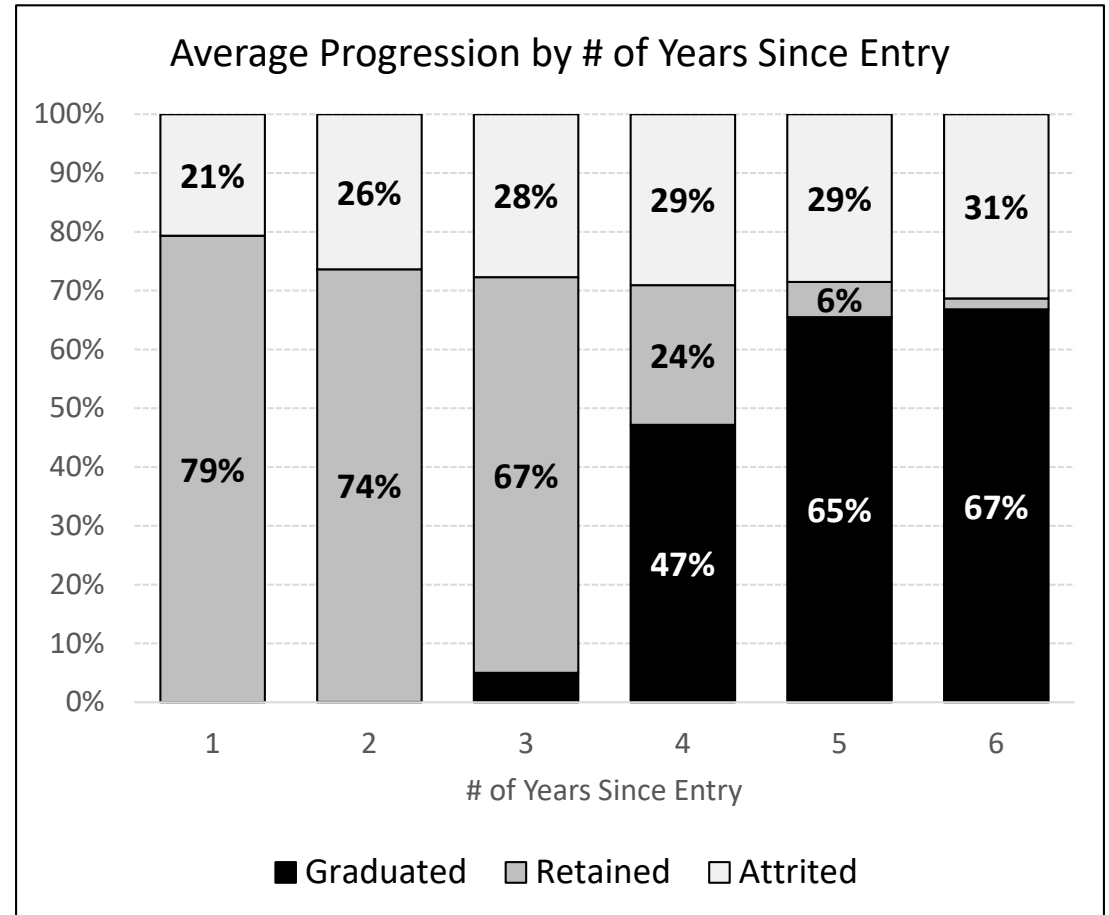
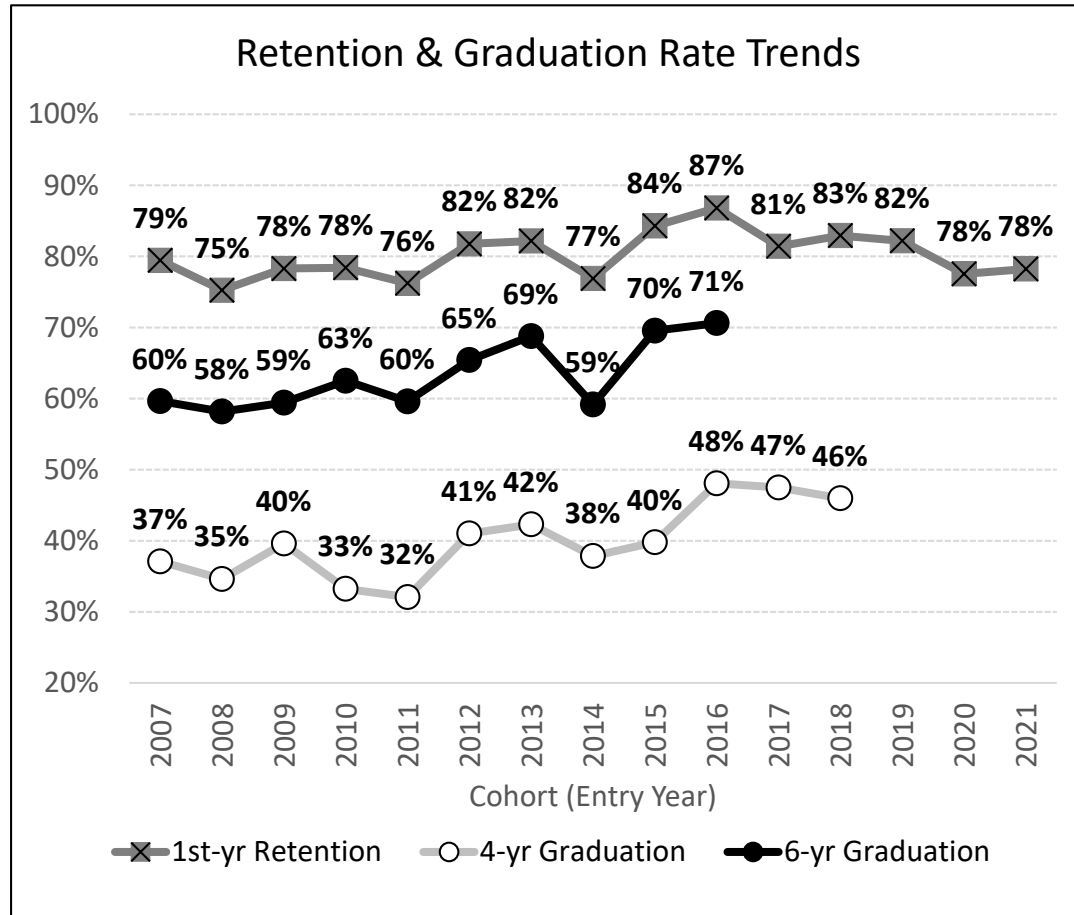


Overall Retention and Graduation Rates Prescott



Source: Institutional Research.

Cohort = Fall term, first-time, full-time BS degree-seekers. Retention = Re-enrolled the following fall (DB/PC) or Jul-Sep (WW, beginning in 2021) in any degree program.

Graduation = Obtained a BS degree from DB, PC, or WW (in any degree program). Graduation rates are cumulative (all students who graduated up to that point).

Average Progression = combination of three most recent cohorts at each yearly increment.

ERAU Retention & Graduation Rates (One-Six Years After Entry): Overall

Prescott		Entry Year									
		2012	2013	2014	2015	2016	2017	2018	2019	2020	2021
After 1 year	Initial Headcount	373	443	502	579	599	678	609	752	739	744
	Returned	81.8%	82.2%	76.9%	84.3%	86.8%	81.4%	82.9%	82.2%	77.5%	78.2%
	Attrited	18.2%	17.8%	23.1%	15.7%	13.2%	18.6%	17.1%	17.8%	22.5%	21.8%
After 2 years	Initial Headcount	373	442	502	579	599	678	609	752	739	
	Returned	71.8%	74.7%	68.1%	75.8%	79.0%	74.3%	76.0%	75.9%	69.1%	
	Graduated	.0%	.0%	.0%	.0%	.0%	.1%	.2%	.0%	.0%	
	Attrited	28.2%	25.3%	31.9%	24.2%	21.0%	25.5%	23.8%	24.1%	30.9%	
After 3 years	Initial Headcount	373	442	502	578	599	678	609	752		
	Returned	65.4%	68.1%	60.6%	68.5%	72.3%	67.7%	65.0%	68.8%		
	Graduated	4.0%	2.9%	3.6%	4.0%	3.2%	4.0%	6.4%	4.8%		
	Attrited	30.6%	29.0%	35.9%	27.5%	24.5%	28.3%	28.6%	26.5%		
After 4 years	Initial Headcount	373	442	502	578	599	678	609			
	Returned	28.7%	26.5%	24.5%	31.0%	22.9%	24.0%	24.3%			
	Graduated	41.0%	42.3%	37.8%	39.8%	48.1%	47.5%	46.0%			
	Attrited	30.3%	31.2%	37.6%	29.2%	29.0%	28.5%	29.7%			
After 5 years	Initial Headcount	373	442	502	578	599	678				
	Returned	5.6%	4.8%	4.6%	6.4%	6.5%	5.2%				
	Graduated	63.0%	64.3%	56.0%	63.5%	66.8%	66.1%				
	Attrited	31.4%	31.0%	39.4%	30.1%	26.7%	28.8%				
After 6 years	Initial Headcount	373	442	502	578	599					
	Returned	2.4%	1.1%	1.4%	1.7%	2.3%					
	Graduated	65.4%	68.8%	59.2%	69.6%	70.6%					
	Attrited	32.2%	30.1%	39.4%	28.7%	27.0%					

Source: Institutional Research. Cohort = First-time, full-time, bachelor's degree-seeking students (as of fall census).

> Columns - entering cohort, as defined by their entry year (fall term). Decreases in a cohort's Initial Headcount over time reflect the exclusion of deaths that occurred within the stated interval.

> Rows - status at each interval after entry (as of fall census): Returned = Re-enrolled the following fall (DB/PC) or July-Sept (WW, beginning 2021) in any degree program. Graduated = Obtained a BS degree from DB, PC, or WW (in any degree program); rates are cumulative. Attrited = neither Returned nor Graduated.

ERAU Retention & Graduation Rates (One-Six Years After Entry): Overall, with additional breakouts for attriters

Prescott		Entry Year										
		2012	2013	2014	2015	2016	2017	2018	2019	2020	2021	
After 1 year	Initial Headcount	373	443	502	579	599	678	609	752	739	744	
	Returned	81.8%	82.2%	76.9%	84.3%	86.8%	81.4%	82.9%	82.2%	77.5%	78.2%	
	Attrited	Withdrew/Stopped Out	16.6%	16.0%	19.9%	14.3%	10.4%	16.1%	14.3%	15.8%	20.2%	18.1%
		Suspended/Dismissed	1.6%	1.8%	3.2%	1.4%	2.8%	2.5%	2.8%	2.0%	2.3%	3.6%
After 2 years	Initial Headcount	373	442	502	579	599	678	609	752	739		
	Returned	.0%	.0%	.0%	.0%	79.0%	74.3%	.0%	.0%	69.1%		
	Graduated	.0%	.0%	.0%	.0%	.0%	.1%	.2%	.0%	.0%		
	Attrited	Withdrew/Stopped Out	24.7%	21.7%	27.7%	21.2%	16.9%	22.4%	20.5%	21.0%	26.9%	
		Suspended/Dismissed	3.5%	3.6%	4.2%	2.9%	4.2%	3.1%	3.3%	3.1%	3.9%	
After 3 years	Initial Headcount	373	442	502	578	599	678	609	752			
	Returned	65.4%	68.1%	60.6%	68.5%	72.3%	67.7%	65.0%	68.8%			
	Graduated	4.0%	2.9%	3.6%	4.0%	3.2%	4.0%	6.4%	4.8%			
	Attrited	Withdrew/Stopped Out	26.8%	24.9%	31.3%	23.7%	19.7%	24.9%	24.5%	23.0%		
		Suspended/Dismissed	3.8%	4.1%	4.6%	3.8%	4.8%	3.4%	4.1%	3.5%		
After 4 years	Initial Headcount	373	442	502	578	599	678	609				
	Returned	28.7%	26.5%	24.5%	31.0%	22.9%	24.0%	24.3%				
	Graduated	41.0%	42.3%	37.8%	39.8%	48.1%	47.5%	46.0%				
	Attrited	Withdrew/Stopped Out	26.5%	26.7%	32.7%	25.3%	23.2%	24.5%	25.5%			
		Suspended/Dismissed	3.8%	4.5%	5.0%	4.0%	5.8%	4.0%	4.3%			
After 5 years	Initial Headcount	373	442	502	578	599	678					
	Returned	5.6%	4.8%	4.6%	6.4%	6.5%	5.2%					
	Graduated	63.0%	64.3%	56.0%	63.5%	66.8%	66.1%					
	Attrited	Withdrew/Stopped Out	27.6%	26.2%	34.7%	25.4%	20.7%	24.5%				
		Suspended/Dismissed	3.8%	4.8%	4.8%	4.7%	6.0%	4.3%				
After 6 years	Initial Headcount	373	442	502	578	599						
	Returned	2.4%	1.1%	1.4%	1.7%	2.3%						
	Graduated	65.4%	68.8%	59.2%	69.6%	70.6%						
	Attrited	Withdrew/Stopped Out	27.9%	25.3%	34.3%	23.9%	21.0%					
		Suspended/Dismissed	4.3%	4.8%	5.2%	4.8%	6.0%					

Source: Institutional Research. Cohort = First-time, full-time, bachelor's degree-seeking students (as of fall census).

> Columns - entering cohort, as defined by their entry year (fall term). Decreases in a cohort's Initial Headcount over time reflect the exclusion of deaths that occurred within the stated interval.

> Rows - status at each interval after entry (as of fall census): Returned = Re-enrolled the following fall (DB/PC) or July-Sept (WW, beginning 2021) in any degree program. Graduated = Obtained a BS degree from DB, PC, or WW (in any degree program); rates are cumulative. Attrited = neither Returned nor Graduated.